

CITY OF SAN LEANDRO

ADAMS AVE.
HESTER ST.

Area Annexed By Ordinance No. 723 N.S.

Area Annexed By Ord. No. 831 N.S.

Area Annexed By Ord. No. 827 N.S.

TERRITORY ANNEXED BY RESOLUTION NO.

Area Annexed By Ord. No. 846 N.S.

UNINCORPORATED

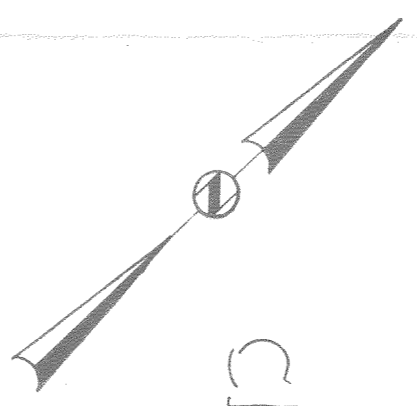
Point of Beginning

DAVIS ST.

CITY OF OAKLAND

CITY OF SAN LEANDRO

EDEN *Area Annexed By Road Ord. No. 64-174*



LEGEND
----- Indicates Existing City of San Leandro Boundary Line.

THIS MAP, WHEN RECORDED, ACCOMPANIED AN AFFIDAVIT AND CERTIFIED COPY OF THE BOUNDARY DESCRIPTION DELINEATED HEREON AS REQUIRED BY THE AFFIDAVIT COMPLETION LAW OF 1939, WHICH AFFIDAVIT AND BOUNDARY DESCRIPTION ARE RECORDED IN REEL..... IMAGE..... OFFICIAL RECORDS, ALAMEDA COUNTY, CALIFORNIA.

FILED AT THE REQUEST OF THE CITY OF SAN LEANDRO, AT DAY OF M. ON THE 19..... IN THE OFFICE OF THE COUNTY RECORDER OF ALAMEDA COUNTY, STATE OF CALIFORNIA.

MAP DELINEATING BOUNDARY OF TERRITORY ANNEXED TO THE CITY OF SAN LEANDRO, CALIFORNIA BY RESOLUTION UNDER ANNEXTATION OF UNINHABITED TERRITORY ACT OF 1939

CITY ENGINEER

COUNTY RECORDER IN AND FOR THE COUNTY OF ALAMEDA, STATE OF CALIFORNIA.

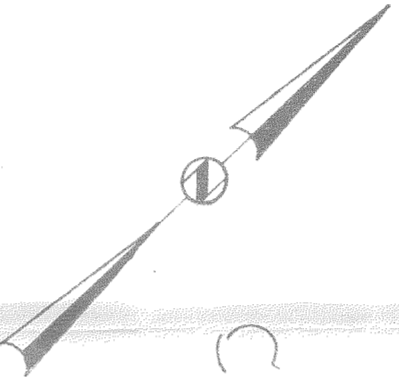
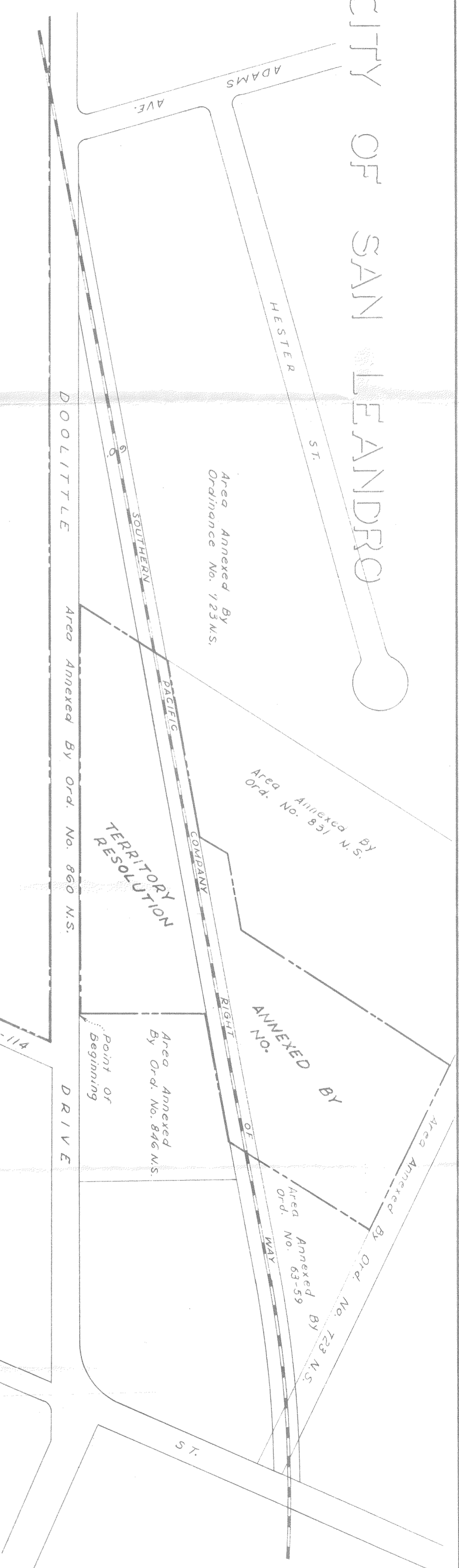
DEPUTY COUNTY RECORDER

SCALE: 1" = 200'

CITY OF SAN LEANDRO

CITY OF OAKLAND

CITY OF SAN LEANDRO



LEGEND
 - - - - - Indicates Existing City of San Leandro Boundary Line.

THIS MAP, WHEN RECORDED, ACCOMPANIED AN AFFIDAVIT AND CERTIFIED COPY OF THE BOUNDARY DESCRIPTION DELINEATED HEREON AS REQUIRED BY THE AFFIDAVIT COMPLETION LAW OF 1939, WHICH AFFIDAVIT AND BOUNDARY DESCRIPTION ARE RECORDED IN REEL _____ IMAGE _____ OFFICIAL RECORDS, ALAMEDA COUNTY, CALIFORNIA.

FILED AT THE REQUEST OF THE CITY OF SAN LEANDRO, AT _____ MINUTES PAST _____ M. ON THE _____ DAY OF _____ 19____ IN THE OFFICE OF THE COUNTY RECORDER OF ALAMEDA COUNTY, STATE OF CALIFORNIA.

MAP DELINEATING BOUNDARY OF TERRITORY ANNEXED TO THE CITY OF SAN LEANDRO, CALIFORNIA BY RESOLUTION UNDER ANNEXATION OF UNINHABITED TERRITORY ACT OF 1939

CITY ENGINEER

COUNTY RECORDER IN AND FOR THE COUNTY OF ALAMEDA, STATE OF CALIFORNIA. BY _____ DEPUTY COUNTY RECORDER

SCALE: 1" = 200'

Book 79A, - 422

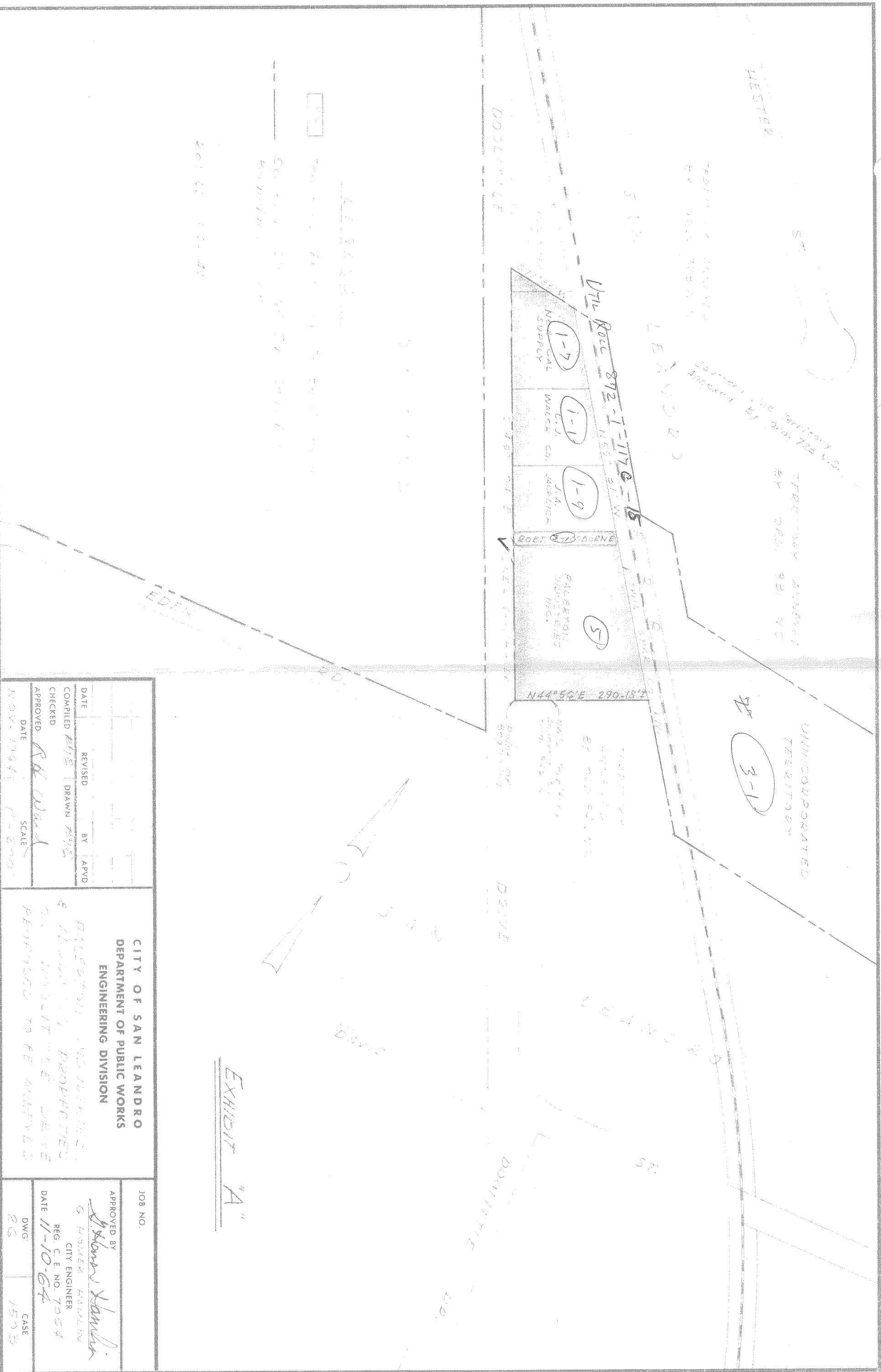


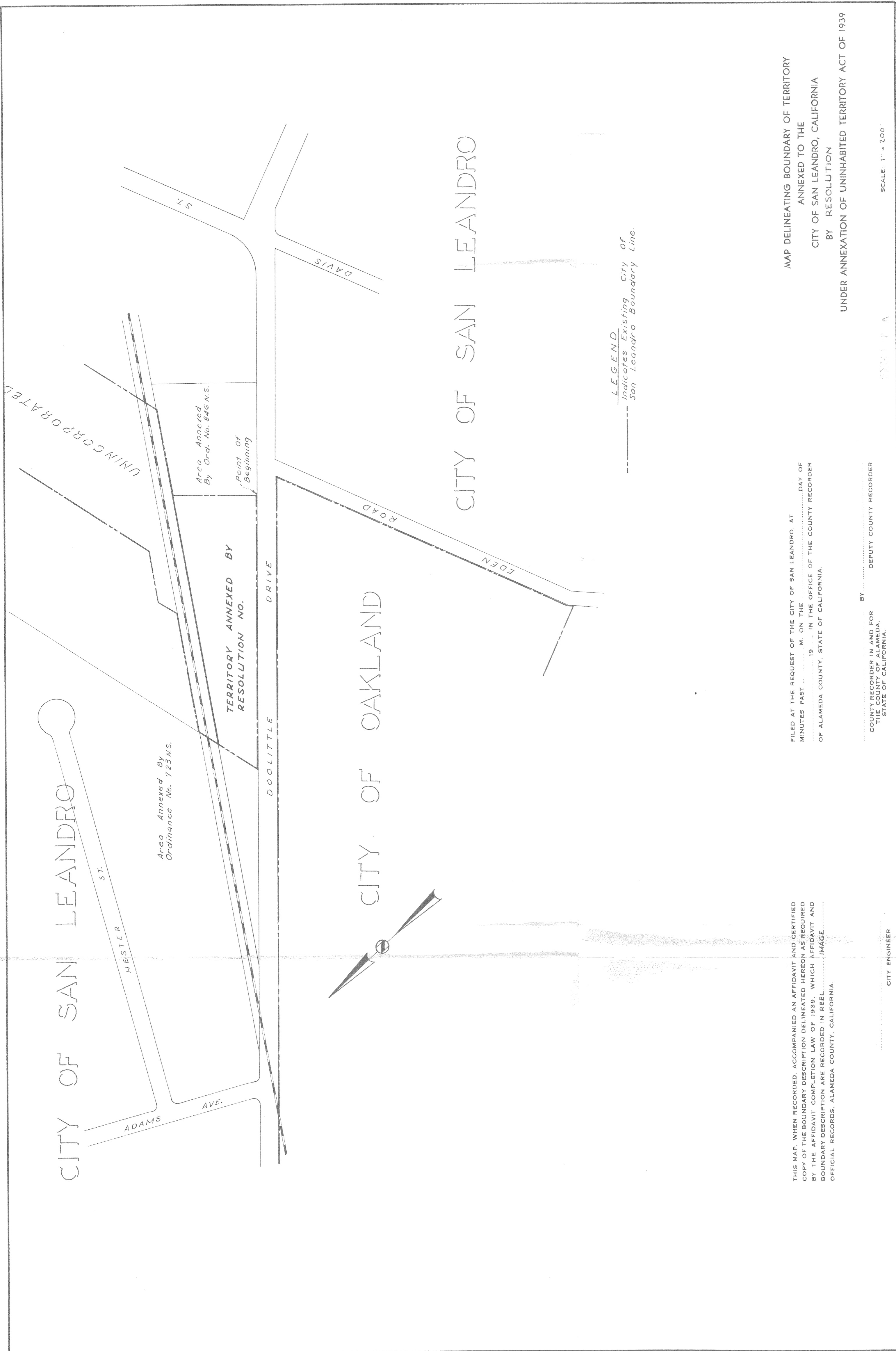
EXHIBIT "A"

DATE		REVISED	BY	APVD
COMPILED		BY	DRAWN	BY
CHECKED				
APPROVED				
DATE	SCALE			
NOV. 1964	1"=200'			

CITY OF SAN LEANDRO
DEPARTMENT OF PUBLIC WORKS
ENGINEERING DIVISION

DALBERTON AND JACKSON'S
& SORNE'S PROPERTIES
70' DRIVE TO BE DELETED
RETURNED TO FE ANNEXES

JOB NO.	APPROVED BY
	<i>G. Harker Hamlin</i>
	G. HARKER HAMLIN CITY ENGINEER
DATE	REG. C. E. NO.
11-10-64	7054
DWG.	CASE
26	1503



CITY OF SAN LEANDRO

CITY OF OAKLAND

CITY OF SAN LEANDRO

ADAMS

HESTER ST.

AVE.

DOOLITTLE DRIVE

ROAD

EDEN

DAVIS

ST.

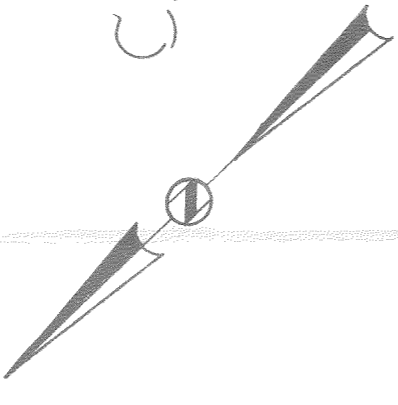
Area Annexed By Ordinance No. 123 M.S.

Area Annexed By Ord. No. 846 M.S.

Point of Beginning

TERRITORY ANNEXED BY RESOLUTION NO.

LEGEND
 - - - - - Indicates Existing City of San Leandro Boundary Line.



THIS MAP, WHEN RECORDED, ACCOMPANIED AN AFFIDAVIT AND CERTIFIED COPY OF THE BOUNDARY DESCRIPTION DELINEATED HEREON AS REQUIRED BY THE AFFIDAVIT COMPLETION LAW OF 1939. WHICH AFFIDAVIT AND BOUNDARY DESCRIPTION ARE RECORDED IN REEL IMAGE OFFICIAL RECORDS, ALAMEDA COUNTY, CALIFORNIA.

FILED AT THE REQUEST OF THE CITY OF SAN LEANDRO, AT MINUTES PAST M. ON THE DAY OF 19 IN THE OFFICE OF THE COUNTY RECORDER OF ALAMEDA COUNTY, STATE OF CALIFORNIA.

MAP DELINEATING BOUNDARY OF TERRITORY ANNEXED TO THE CITY OF SAN LEANDRO, CALIFORNIA BY RESOLUTION UNDER ANNEXATION OF UNINHABITED TERRITORY ACT OF 1939

COUNTY RECORDER IN AND FOR THE COUNTY OF ALAMEDA, STATE OF CALIFORNIA.

CITY ENGINEER

SCALE: 1" = 200'